













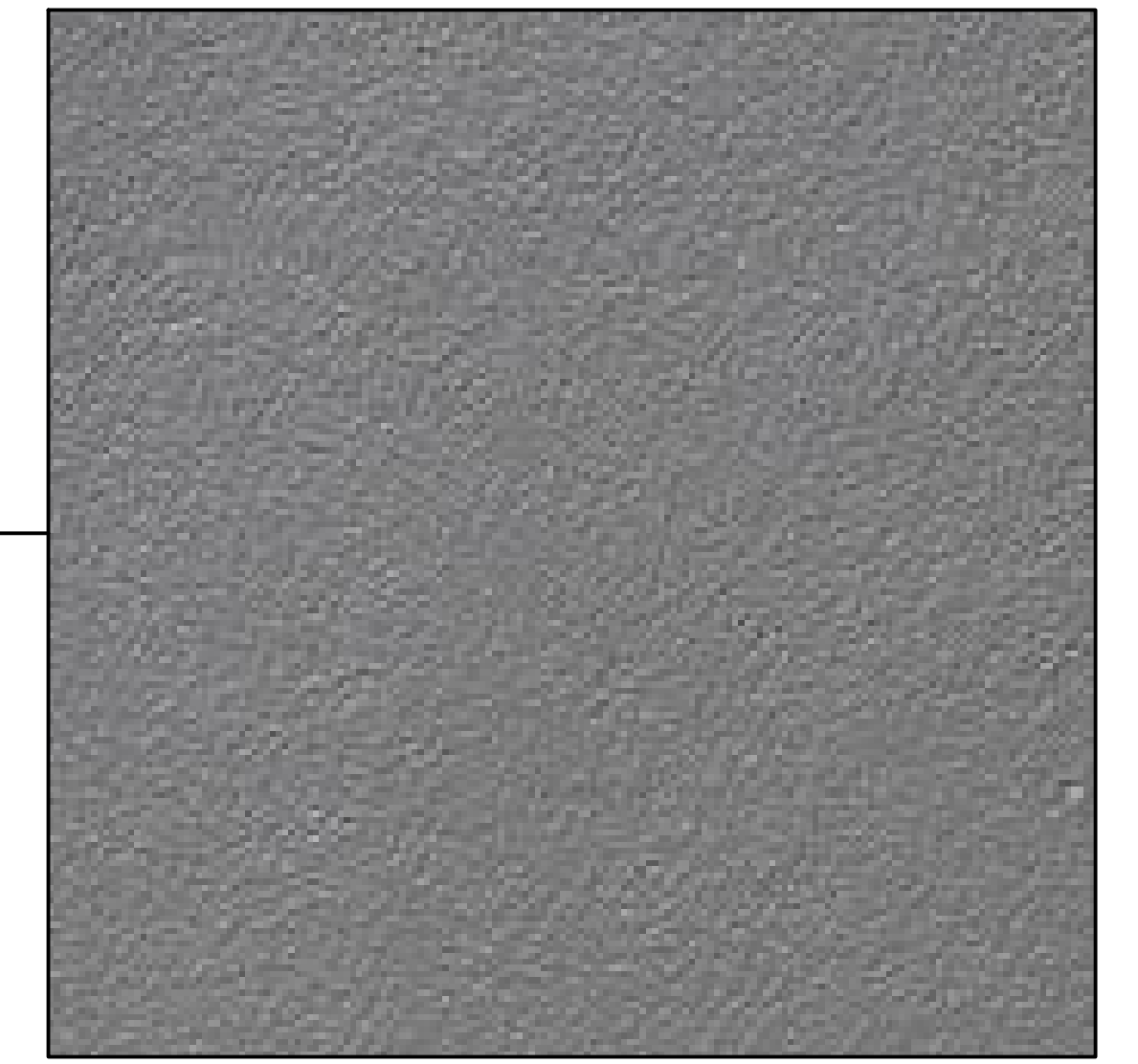
CERTAplank®
(SAVANNAH WICKER)

CERTAINEED'S CERTAPLANK® SINGLE 7" REINFORCED SIDING IS A DURABLE AND VERSATILE OPTION THAT REPLICATES THE LOOK OF NATURAL WOOD WITHOUT THE MAINTENANCE. WITH SUPERIOR IMPACT RESISTANCE, ECO-FRIENDLINESS, AND EASY INSTALLATION, IT'S A SMART INVESTMENT FOR ANY HOMEOWNER LOOKING TO UPGRADE THEIR SIDING.



CERTAplank®
(COLONIAL WHITE)

CERTAINEED'S CERTAPLANK® SINGLE 7" REINFORCED SIDING IS A DURABLE AND VERSATILE OPTION THAT REPLICATES THE LOOK OF NATURAL WOOD WITHOUT THE MAINTENANCE. WITH SUPERIOR IMPACT RESISTANCE, ECO-FRIENDLINESS, AND EASY INSTALLATION, IT'S A SMART INVESTMENT FOR ANY HOMEOWNER LOOKING TO UPGRADE THEIR SIDING.



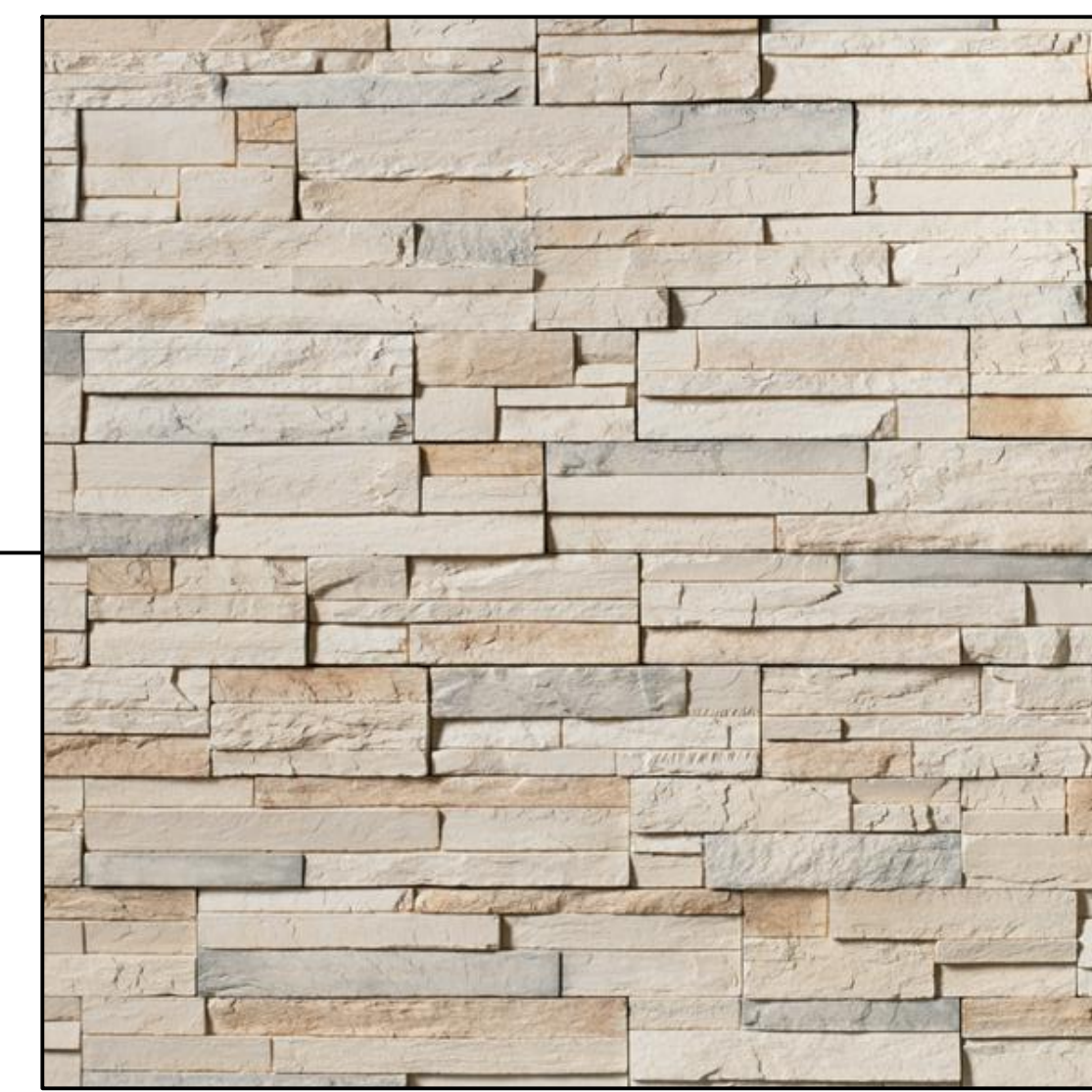
HARDIE™ BOARD
(FINE SAND)

FINE SAND HAS AN EVEN-TEXTURED, SMOOTH, AND CONSISTENT FINISH FOR A SLEEK LOOK. SHIPLAP JOINTS CREATE V-GROOVED, ARCHITECTURAL LINES TO ADD VISUAL INTEREST. PANELS CAN BE ORIENTED HORIZONTALLY OR VERTICALLY TO ACHIEVE A VARIETY OF DESIGNS. JAMES HARDIE'S PRIMED FOR PAINT COLLECTION GIVES YOU THE POWER TO CHOOSE PAINT FOR YOUR HOME'S EXTERIOR. IT'S PRIMED. IT'S READY FOR FIELD PAINTING. IT'S A DURABLE, HIGH-PERFORMANCE CANVAS.



LANDMARK SHINGLES
(HEATHER BLEND)

LANDMARK SHINGLES PROVIDE DURABILITY AND AESTHETICS. THEY FEATRE CLASS A FIRE RESISTANCE AND STREAKFIGHTER® ALGAE RESISTANCE, WITH A MULTI-LAYER DESIGN AND VARIOUS COLORS.



PRO-FIT® LEDGESTONE
(SOUTHWEST BLEND)

PRO-FIT LEDGESTONE IS REFINED AND EASY TO USE, WITH CLEAN COLORS THAT ACCENT A MULTITUDE OF DESIGN CHOICES. MADE UP OF TEXTURED PIECES OF THE SAME HEIGHT, IT IS IDEAL FOR TIGHT FITS AND INTRICATE CONSTRUCTIONS.



UNAUTHORIZED REPRODUCTION OR MODIFICATION TO THIS DOCUMENT IS PROHIBITED. THE ASSOCIATION OF PROFESSIONAL ENGINEERS AND SURVEYORS OF THE STATE OF NEW YORK (NYSE) IS THE REGISTERING AUTHORITY FOR THIS DOCUMENT. JASON M. DELL, LICENSED PROFESSIONAL ENGINEER, P.E. NYSE NO. 087215

4029 ROUTE 50 SENIOR HOUSING 55+ SITE PLAN
4029 ROUTE 50, TOWN OF WILTON, SARATOGA COUNTY, NEW YORK

LANSING
ENGINEERING
BASED IN WILTON, NY (REG. #13181)
(518) 888-6843

REVISION RECORD / DESCRIPTION
DATE
PRELIMINARY / NOT FOR CONSTRUCTION

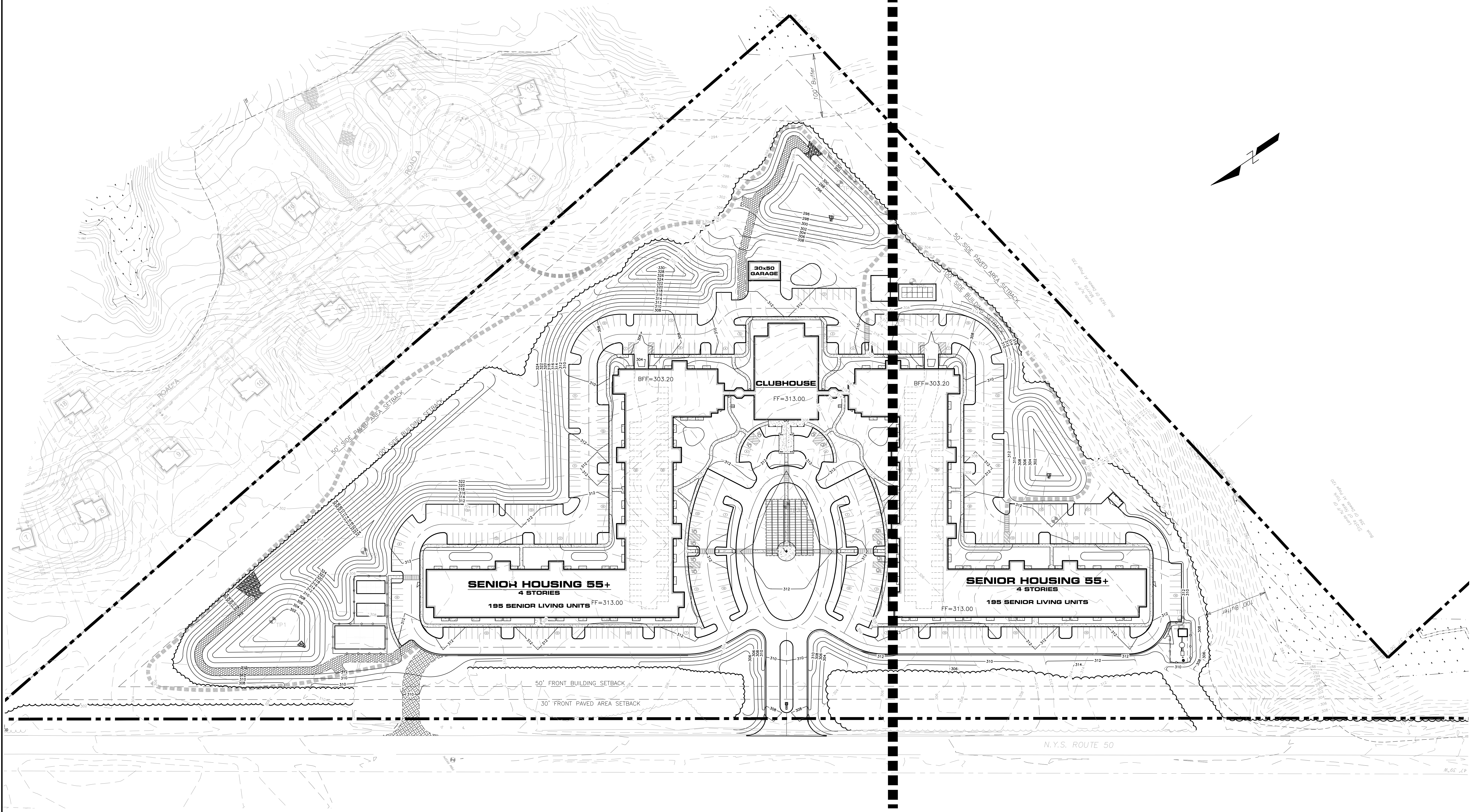
**BUILDING
FAÇADE
MATERIALS**

PROJ. NO: 979.00
SCALE: AS SHOWN
DATE: 01/02/24
SHEET 1 OF 1
BFM-1

\\C:\In\00d Jobs\4029 Route 50\color schematic.dwg Jan 02, 2024 10:36PM

SHEET LM-1 & UG-1

SHEET LM-2 & UG-2



INDEX PLAN



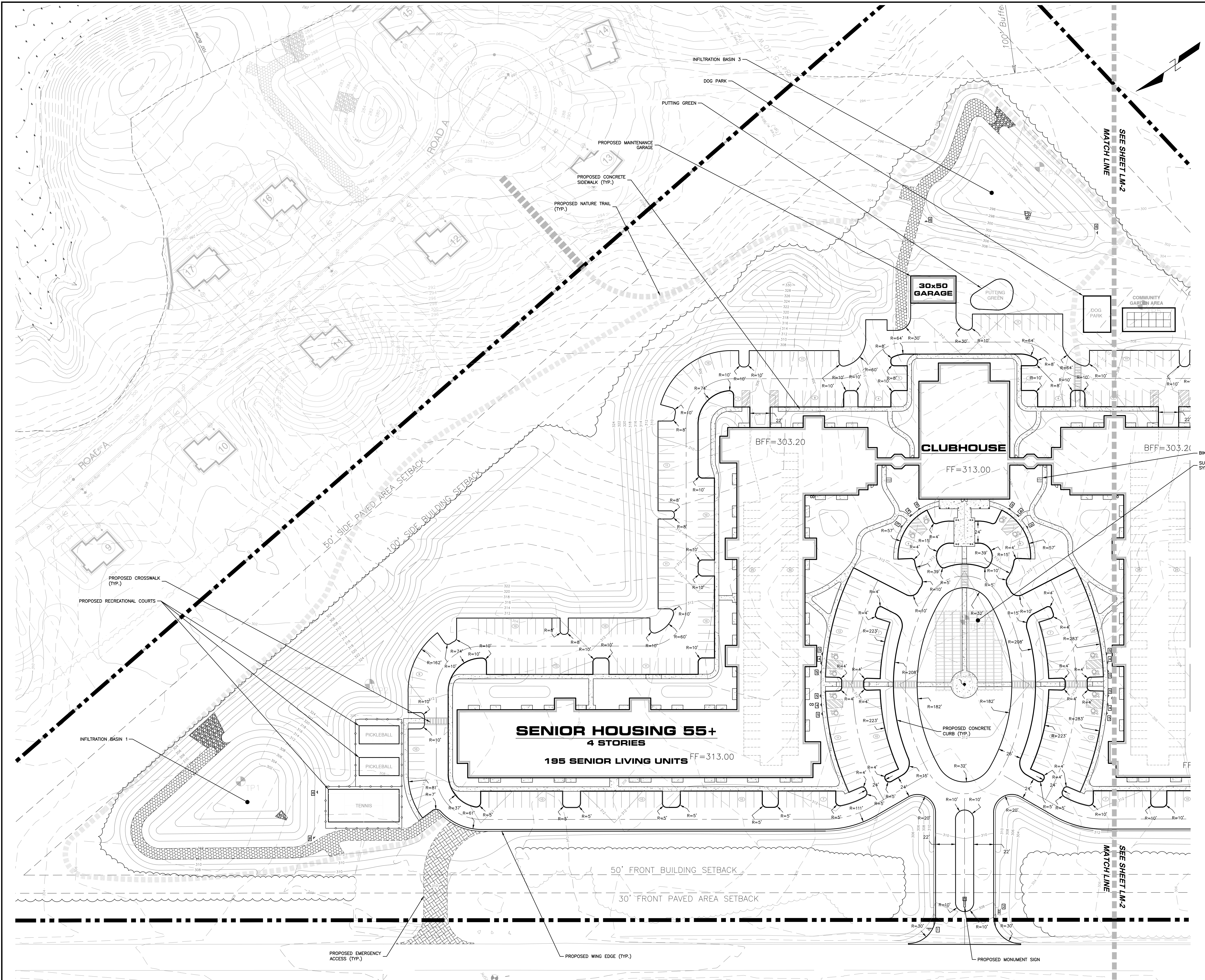
4029 ROUTE 50 SENIOR HOUSING 55+ SITE PLAN
4029 ROUTE 50, TOWN OF WILTON, SARATOGA COUNTY, NEW YORK



UNAUTHORIZED
REPRODUCTION
OR
ADDITION TO THIS
DRAWING IS
PROHIBITED.
THE
LOCATION OF THE
PROJECT
LANSING ENGINEERING, P.C.
JASON M. DELL
NYSPENJ087215

PRELIMINARY / NOT FOR CONSTRUCTION

INDEX PLAN



LEGEND

EXISTING FEATURES	PROPOSED FEATURES
	FIRE HYDRANT
	GATE VALVE
	WATER LINE
	SANITARY LINE
	CATCH BASIN
	STORM/SANITARY MANHOLE
	STORM WATER LINE
	PROPERTY LINE
	EASEMENT LINE
	SWPPP GRADING LINE

TRAFFIC CONTROL DEVICE SCHEDULE

PLAN NO.	DESCRIPTION	QTY.
1	R1-1 "STOP" SIGN 30" X 30"	8
2	ROAD I.D. SIGN	1
4	"NO PARKING" SIGN	6
5	"VAN ACCESSIBLE" HANDICAP RESERVED PARKING SIGN	12
6	STORMWATER MANAGEMENT IDENTIFICATION SIGN	6

NOTE: TRAFFIC CONTROL DEVICES TO BE GALVANIZED STEEL REFLECTIVE DIRECTIONAL SIGN PANEL "HIGH INTENSITY" MEETING MHS DOT SPECIFICATIONS AND MANUAL OF UNIFORM TRAFFIC CONTROL DEVICES.

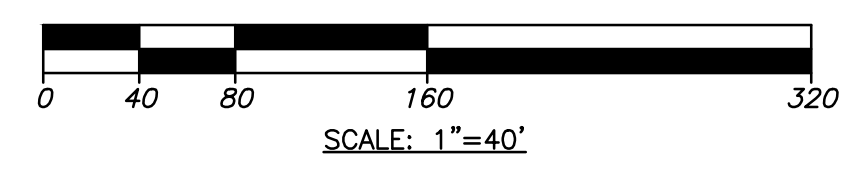
UNAUTHORIZED ADDITION TO THIS LOCATION OF THE SIGNPOST LANSING ENGINEERING, P.C. JASON M. DELL NYS REG. NO. 087215

PRELIMINARY / NOT FOR CONSTRUCTION

LANSING ENGINEERING
 4029 ROUTE 50, TOWN OF WILTON, SARATOGA COUNTY, NEW YORK
 (518) 888-8843

LAYOUT & MATERIALS PLAN
 (1 OF 2)
 PROJ. NO: 979.00
 SCALE: AS SHOWN
 DATE: 12/05/23
 SHEET 4 OF 26

LAYOUT & MATERIALS PLAN

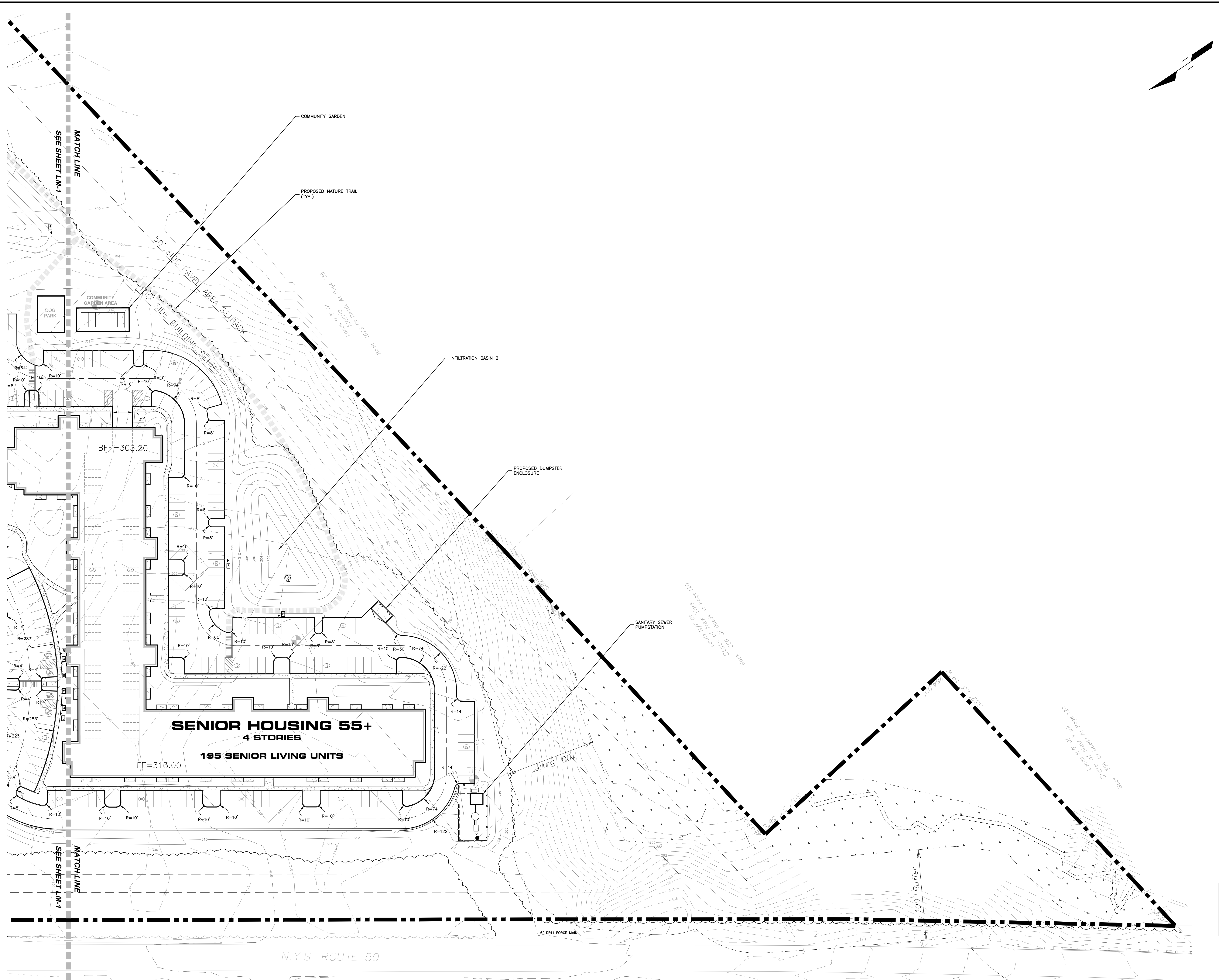


EXISTING FEATURES		PROPOSED FEATURES	
	FIRE HYDRANT		FIRE HYDRANT
	GATE VALVE		GATE VALVE
	WATER LINE		WATER LINE
	SANITARY LINE		SANITARY LINE
	CATCH BASIN		CATCH BASIN
	STORM/SANITARY MANHOLE		STORM/SANITARY MANHOLE
	STORM WATER LINE		STORM WATER LINE
	PROPERTY LINE		PROPERTY LINE
	EASEMENT LINE		EASEMENT LINE
	SWPPP GRADING LINE		SWPPP GRADING LINE

APPROXIMATE LOCATION AND DIRECTION OF SIGN

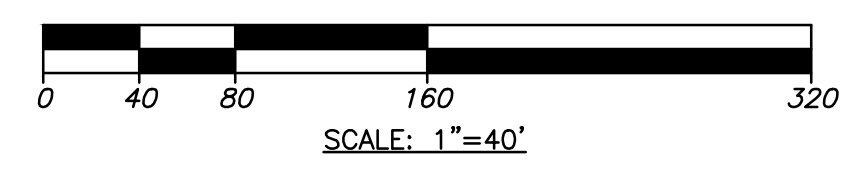
PLAN NO.	DESCRIPTION	QTY.
1	R1-1 "STOP" SIGN 30"X 30"	8
2	ROAD I.D. SIGN	1
4	"NO PARKING" SIGN	6
5	"VAN ACCESSIBLE" HANDICAP RESERVED PARKING SIGN	12
6	STORMWATER MANAGEMENT IDENTIFICATION SIGN	6

*NOTE: TRAFFIC CONTROL DEVICES TO BE GALVANIZED STEEL REFLECTIVE DIRECTIONAL SIGN PANEL "HIGH INTENSITY" MEETING NYS DOT SPECIFICATIONS AND MANUAL OF UNIFORM TRAFFIC CONTROL DEVICES.



NEW YORK STATE DEPARTMENT OF ENVIRONMENTAL CONSERVATION

LAYOUT & MATERIALS PLAN



UNAUTHORIZED REPRODUCTION OR ADDITION TO THIS DOCUMENT IS PROHIBITED. THE LOCATION OF THE INSIGHT LANSING ENGINEERING, P.C. OFFICE IS 100 WEST 30TH STREET, NEW YORK, NY 10018. JASON M. DELL, NYS PE NO. 087215.

4029 ROUTE 50 SENIOR HOUSING 55+ SITE PLAN
 4029 ROUTE 50, TOWN OF WILTON, SARATOGA COUNTY, NEW YORK
 DATE: REVISION RECORD/DESCRIPTION
 PRELIMINARY / NOT FOR CONSTRUCTION

LANSING
 ENGINEERING
 100 WEST 30TH STREET
 NEW YORK, NY 10018
 (212) 869-8843

LAYOUT & MATERIALS PLAN (2 OF 2)
 PROJ. NO: 979.00
 SCALE: AS SHOWN
 DATE: 12/05/23
 SHEET 5 OF 26
 LM-2